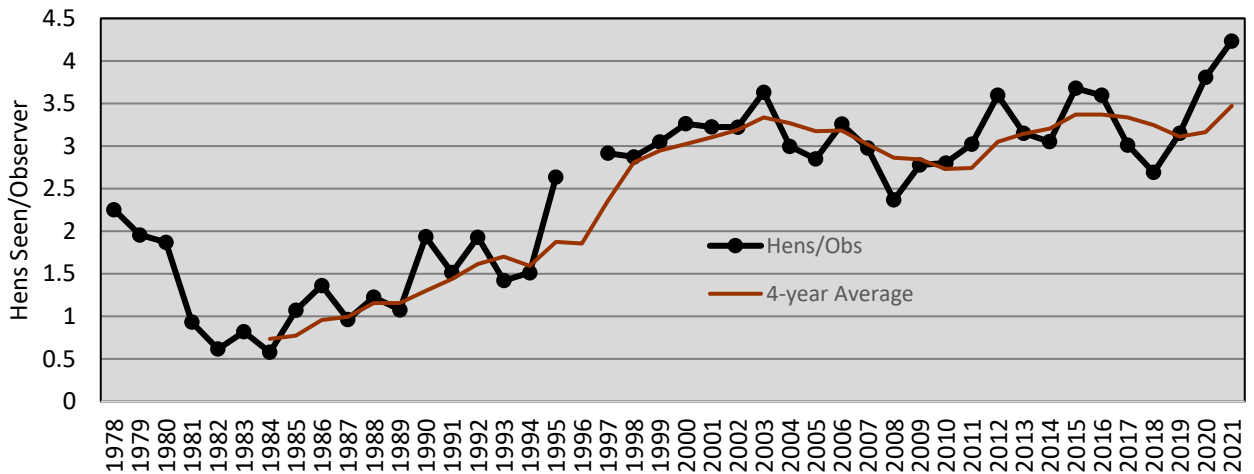


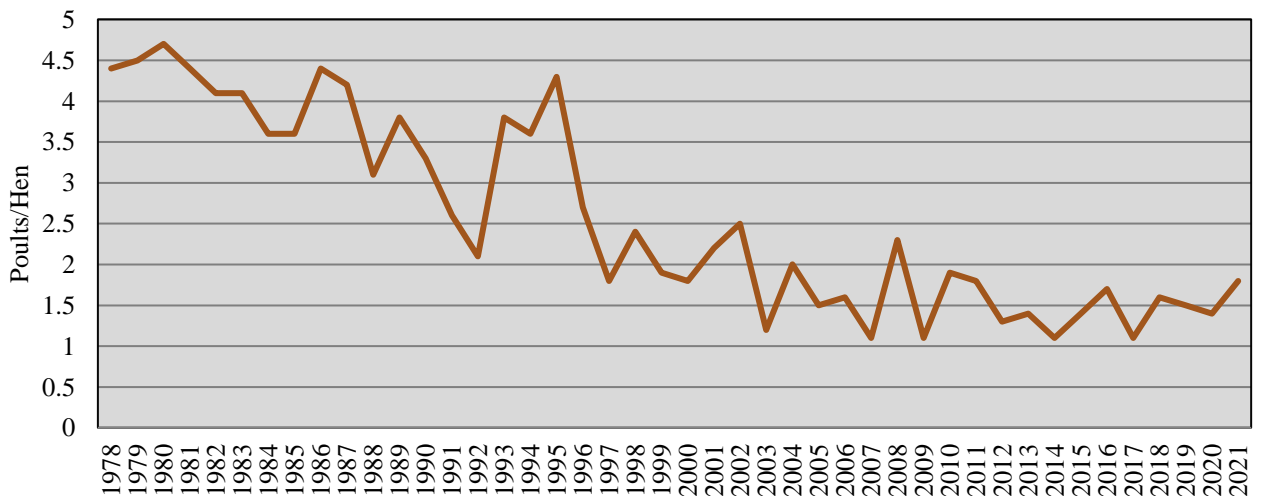
Turkey Production Index Survey

- DNR personnel and members of the public recorded observations while performing field duties during June, July and August. Hens/observer is an index that tracks the female segment of the population, while poult/hen is used as a measure of relative quality of the reproductive season and is tracked long-term.
- The hens/observer value for 2021 increased to 4.2, bringing the 4-year average to 3.4. Poults/hen values have fluctuated around 1.5 since 2003 after a precipitous decline over the preceding two decades. In 2021, 1.8 poults/hen were observed, which was the highest value observed since 2011.

Hens Seen/Observer 1981-2021



Poults/Hen 1978-2021



Turkey Hunting Population Index Survey

- The turkey hunting population is indexed through cooperators reporting their daily hunting statistics throughout the turkey hunting season. Turkeys seen/hour is a statewide hunting population index and gobblers heard/hour is an index that tracks the male segment of the population.
- The turkeys seen/hour value for 2022 was 0.46, which was slightly higher than the 4-year average of 0.44. The gobblers heard/hour value for 2022 was 0.34, equal to the 4-year average.
- Both the turkeys seen/hour and the gobblers heard/hour metrics experienced a slight increase after having steadily declined since the early 2010s.

