

## Georgia DNR Shellfish Program

### SHELLFISH

A Georgia fishing license is required to collect Oysters and Clams for recreational purposes. Shellfish must be harvested between the hours of 1/2 hour before official sunrise and 1/2 hour beyond official sunset. Shellfish may only be collected with handheld implements. Recreationally harvested shellfish may NOT be sold.

**Prior to harvest in the approved areas, check with the Georgia DNR Shellfish Sanitation Program for annual season closures and for areas that have been posted as prohibited due to restoration efforts**

### SHELLFISH LIMITS

Oysters must measure no less than 3 inches from hinge to mouth, unless the oyster cannot be removed from a legal sized oyster without destroying it. For clams, the maximum depth from one shell half to the other must be at least 3/4 of an inch thick.

Recreational quantity limits are up to 2 bushels of oysters and 1 bushel of clams per person per day, with a maximum limit of 6 bushels of oysters and 1 bushel of clams per boat per day.

### HARVEST AREA MONITORING

DNR tests shellfish harvest waters monthly for harmful bacteria. When bacterial contamination is found, DNR will close the area until the contamination subsides.

For current harvest area status information, call the Shellfish Sanitation Program at 912.264.7218



For more maps and information concerning our program, please visit

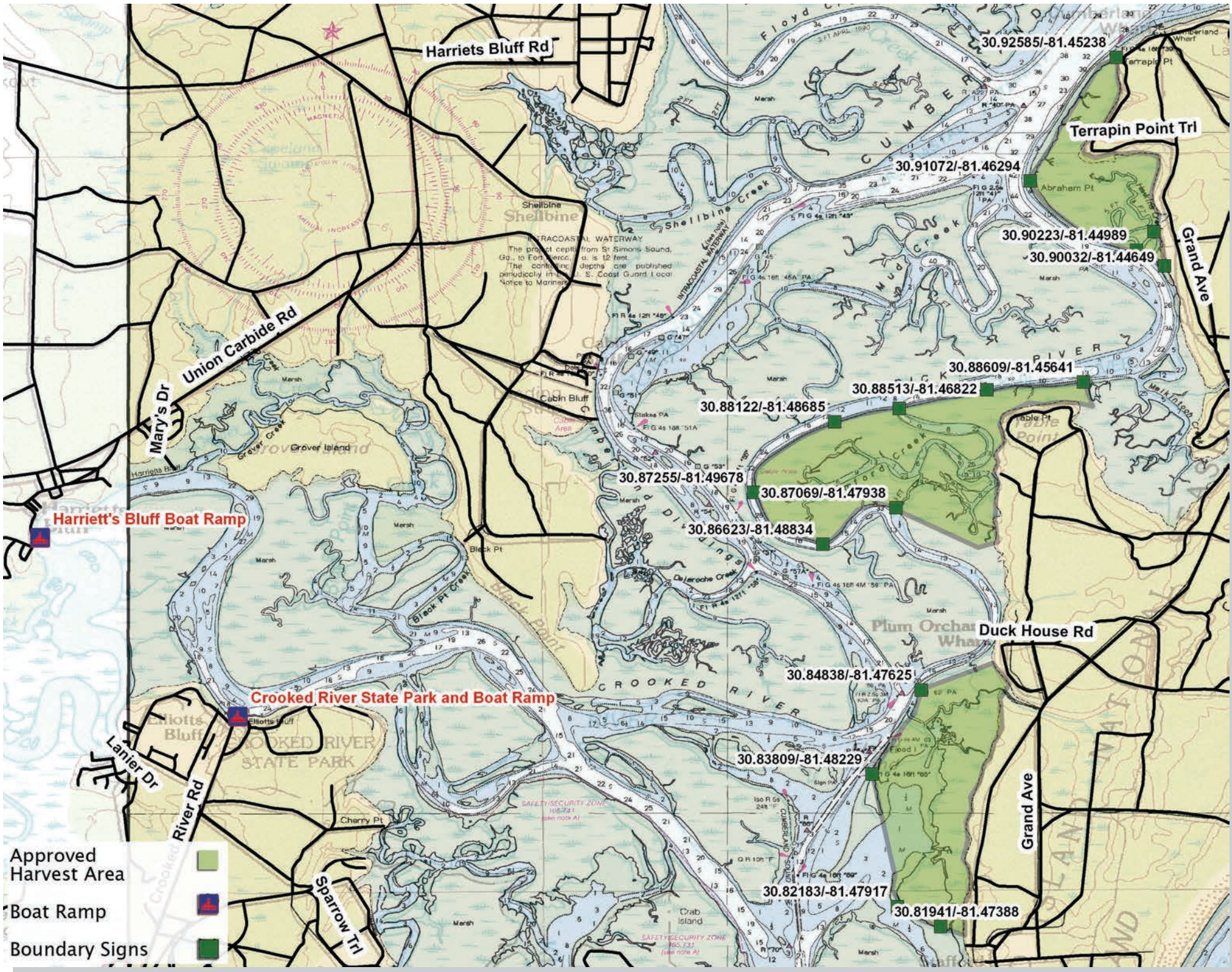
[CoastalGaDNR.org](http://CoastalGaDNR.org)



## Shellfish Recreational Harvest Area Camden County







- Approved Harvest Area
- Boat Ramp
- Boundary Signs

Harriets Bluff Rd

Terrapin Point Trl

Union Carbide Rd

Grand Ave

Mary's Dr

Harriett's Bluff Boat Ramp

Crooked River State Park and Boat Ramp

Duck House Rd

Lanier Dr

Sparrow Trl

Grand Ave

INTRACOASTAL WATERWAY  
The project extends from St Simons Sound, Ga., to Fort Pierce, Fla. is 12 feet.  
The contour depths are published periodically in the U.S. Coast Guard Local Notice to Mariners.

SAFETY/SECURITY ZONE  
100-201  
(see note A)

SAFETY/SECURITY ZONE  
100-231  
(see note A)