

Georgia DNR Shellfish Program

SHELLFISH

A Georgia fishing license is required to collect Oysters and Clams for recreational purposes. Shellfish must be harvested between the hours of 1/2 hour before official sunrise and 1/2 hour beyond official sunset. Shellfish may only be collected with handheld implements. Recreationally harvested shellfish may NOT be sold.

Prior to harvest in the approved areas, check with the Georgia DNR Shellfish Sanitation Program for annual season closures and for areas that have been posted as prohibited due to restoration efforts

SHELLFISH LIMITS

Oysters must measure no less than 3 inches from hinge to mouth, unless the oyster cannot be removed from a legal sized oyster without destroying it. For clams, the maximum depth from one shell half to the other must be at least 3/4 of an inch thick.

Recreational quantity limits are up to 2 bushels of oysters and 1 bushel of clams per person per day, with a maximum limit of 6 bushels of oysters and 1 bushel of clams per boat per day.

HARVEST AREA MONITORING

DNR tests shellfish harvest waters monthly for harmful bacteria. When bacterial contamination is found. DNR will close the area until the contamination subsides.

For current harvest area status information, call the Shellfish Sanitation Program at 912.264.7218



For more maps and information concerning our program, please visit

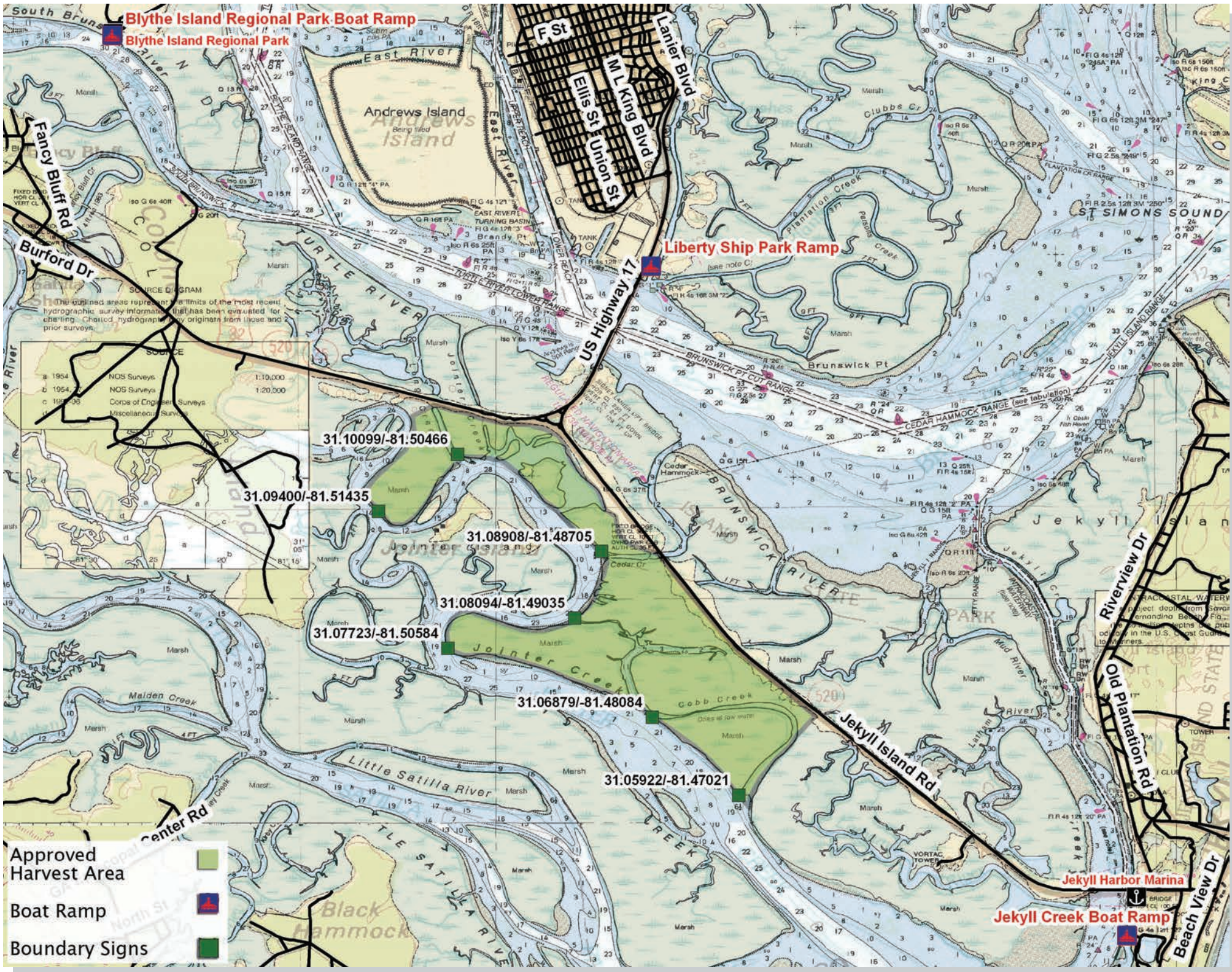
CoastalGaDNR.org



Shellfish Recreational Harvest Area Glynn County



Blythe Island Regional Park Boat Ramp
Blythe Island Regional Park



- Approved Harvest Area
- Boat Ramp ⚓
- Boundary Signs

31.10099/-81.50466

31.09400/-81.51435

31.08908/-81.48705

31.08094/-81.49035

31.07723/-81.50584

31.06879/-81.48084

31.05922/-81.47021

Jekyll Harbor Marina

Jekyll Creek Boat Ramp

TRACIAL WATERWAY PROJECT DISTRICT FROM SAVANNAH AND BUNNELL, GEORGIA, AND OTHER LOCALITIES IN THE U.S. GREAT GEORGIA COAST GUARD

The outlined areas represent the limits of the most recent hydrographic survey information that has been evaluated for charting. Charted hydrographic information originates from those and prior surveys.

SOURCE DIAGRAM

SOURCE	SCALE
a 1954 NOS Surveys	1:10,000
b 1954 NOS Surveys	1:20,000
c 1957-69 Corps of Engineer Surveys	
d Miscellaneous Surveys	