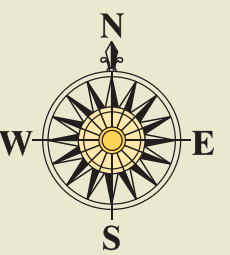
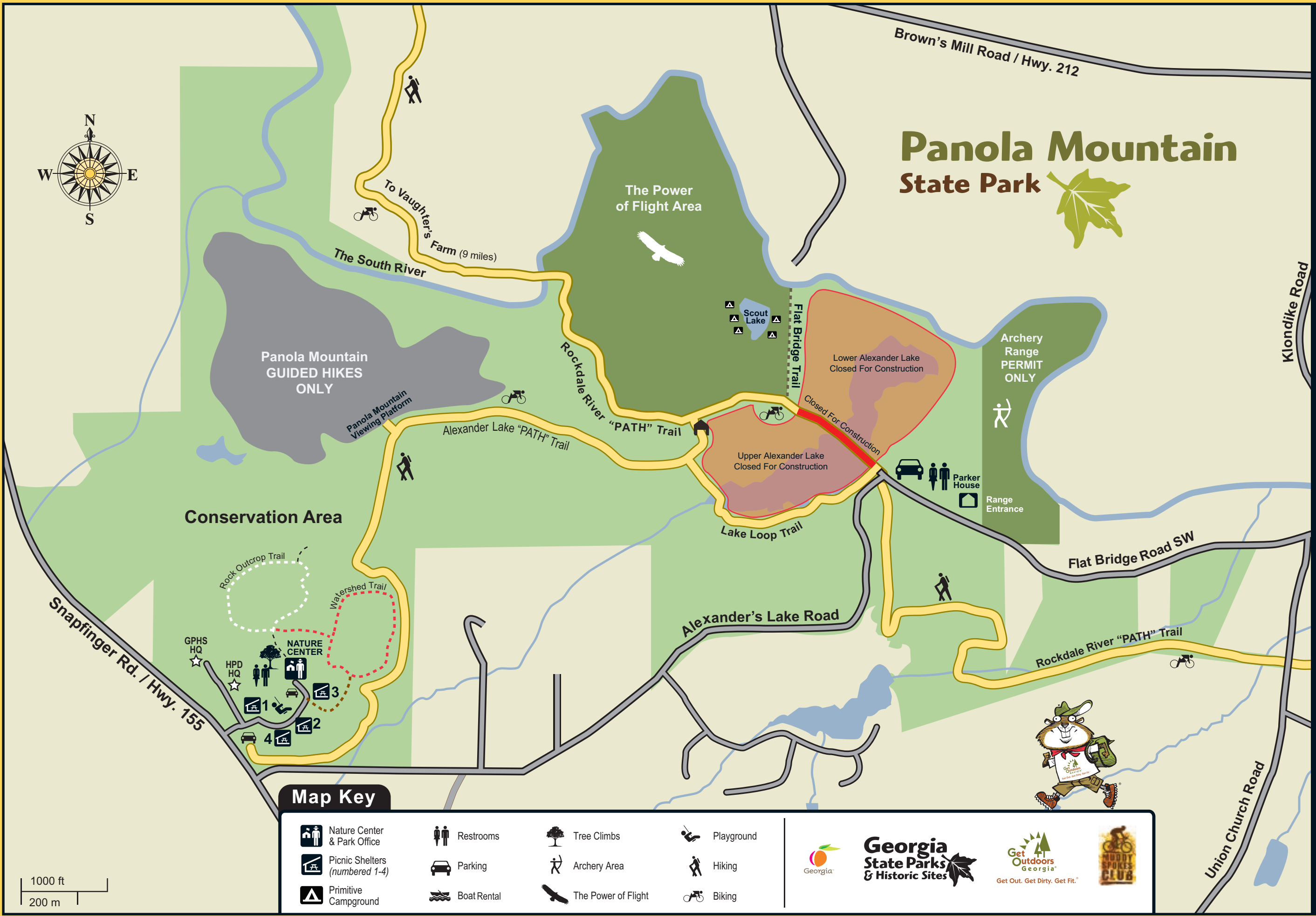
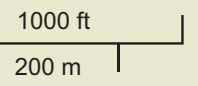


# Panola Mountain State Park Map

2620 Hwy. 155, SW • Stockbridge, GA 30281 • 770-389-7801 • Reservations: 800-864-7275 • Emergency: 911 • GaStateParks.org



### Map Key



# Panola Mountain State Park



Welcome to Panola Mountain State Park! In this beautiful setting, conservation meets recreation to provide visitors with a variety of unforgettable experiences. Here you will see Panola Mountain, a pristine, 100-acre granite outcrop, and its rare, untouched ecosystem just as Native Americans did centuries ago. It has been designated a National Natural Landmark due to its outstanding condition, rarity, diversity, and value to science and education. It is also a part of the Arabia Mountain National Heritage Area, a distinctive partnership among Panola and Arabia Mountains, the Monastery of the Holy Spirit, the Georgia Conservancy, DeKalb, Henry and Rockdale counties, Flat Rock Archives and others. National Heritage Areas are places recognized by Congress for their unique contribution to the nation's history... where history, cultural and natural wonders intersect with everyday places where people live and work. The Arabia Mountain National Heritage Area is one of only 49 around the country.



## Conservation Area

Made up of the original land acquired by the state of Georgia in 1974, this side of the park is accessible at the Highway 155 entrance. Here, you will find the nature center, conference room, gift shop, hiking trails, picnic shelters and playground. This heavily-wooded area serves to protect the ecology of the mountain and to provide educational opportunities for our visitors. Stop by for a solitary nature hike, or bring the whole family out to play and picnic!

## Outcrop Trail

This 3/4 mile trail overlooks a granite outcrop typical of many found in Georgia's Piedmont Region. After traversing a second-growth pine-oak forest, the trail brings you to an overlook where you can see evidence of the geologic forces that created the mountain, as well as the erosion shaping its present appearance. Be sure to look to your right to see Panola Mountain itself! Along the way, you will see some of the plants and animals found in this unique ecosystem; many with special adaptations that allow them to survive on the bare rock face.

## Watershed Trail

This 1.25 mile trail skirts two branches of a small creek draining the Piedmont uplands. A watershed describes an area containing a network of streams, rivers, and the underground water table, all draining into a larger body of water.



## Lakeside Area

While Alexander Lake is currently closed for construction, be sure to still visit the other half of our park, where you can hike and bike the PATH Foundation trails surrounding the lake. On this side of the park, you will also find our archery range and primitive hike-in campsites. Parking is available at the intersection of Alexander Lake and Flatbridge Roads.

## PATH Foundation Trail

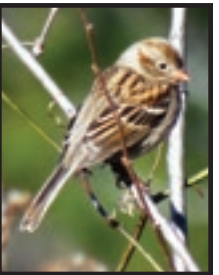
Go over the river and through the woods on the 20 mile (and growing!) PATH Foundation paved trail which connects Panola Mountain with Arabia Mountain, Stonecrest Mall and other stops as well! Hike, bike, or skate your way through this beautiful, tranquil trail and enjoy the stunning scenery connecting Panola's conservation area with the Alexander Lake area. Make sure to hike out on the boardwalk that provides a picturesque overlook of the mountain!

## Archery Range

Want to make use of one of Panola's most unique recreational opportunities? Then our archery range is the perfect place for you to develop your marksmanship. Make sure to bring your own bow and arrows (no broadhead arrows allowed) so you can traverse the 3/4 mile trail to practice on our traditional and 3D animal targets which vary in size, distance, and elevation. Range Passes: \$10 adult; \$5 youth, annual passes available

## Power of Flight

Be sure to bring your binoculars to walk through this restored, native grassland that has been designated as an Important Birding Area by the Audubon Society. Look out for the many birds and butterflies that live here!



## On-Going Programs

- Archery Classes (Ages 8+; equipment provided)
- Guided Mountain Hikes (Ages 10+)
- Tree Top Excursions Tree Climbing Program (Ages 8+)
- Educational Programs

\*Prices, dates, and times are available on our website. Specialty programs offered seasonally. Please call ahead to reserve for pre-scheduled programs.

## Rules

- Do not litter.
- Dogs must be kept on a 6' leash at all times.
- Alcohol prohibited on all state park property.
- A valid ParkPass must be displayed at all times.

## Rentals

\*Call the Nature Center for reservation information

- Picnic Shelter
- Alexander Lake Pavilion
- Conference Room
- Bicycles
- Primitive Campsite



## Park Facilities

- Park Hours: Open Daily 7 a.m. to Dusk
- Nature Center Hours: Open Daily 8:00 a.m. to 5 p.m.
- \$5 parking. Annual passes available.
- **Please note:** The Mountain is not open to the general public due to its conservation status. Ranger-led hikes are available. Check website for dates and times. Call to reserve.

## General Facility Information

- 1,635 Acres
- Nature Center
- Gift Shop
- Conference Room
- Two Fishing Lakes (Closed for Construction)
- Alexander Lake Pavilion
- Archery Range
- 4 Picnic Shelters
- Playground
- Primitive Campsites
- Hiking Trails
- PATH Foundation
- Rockdale River Trail